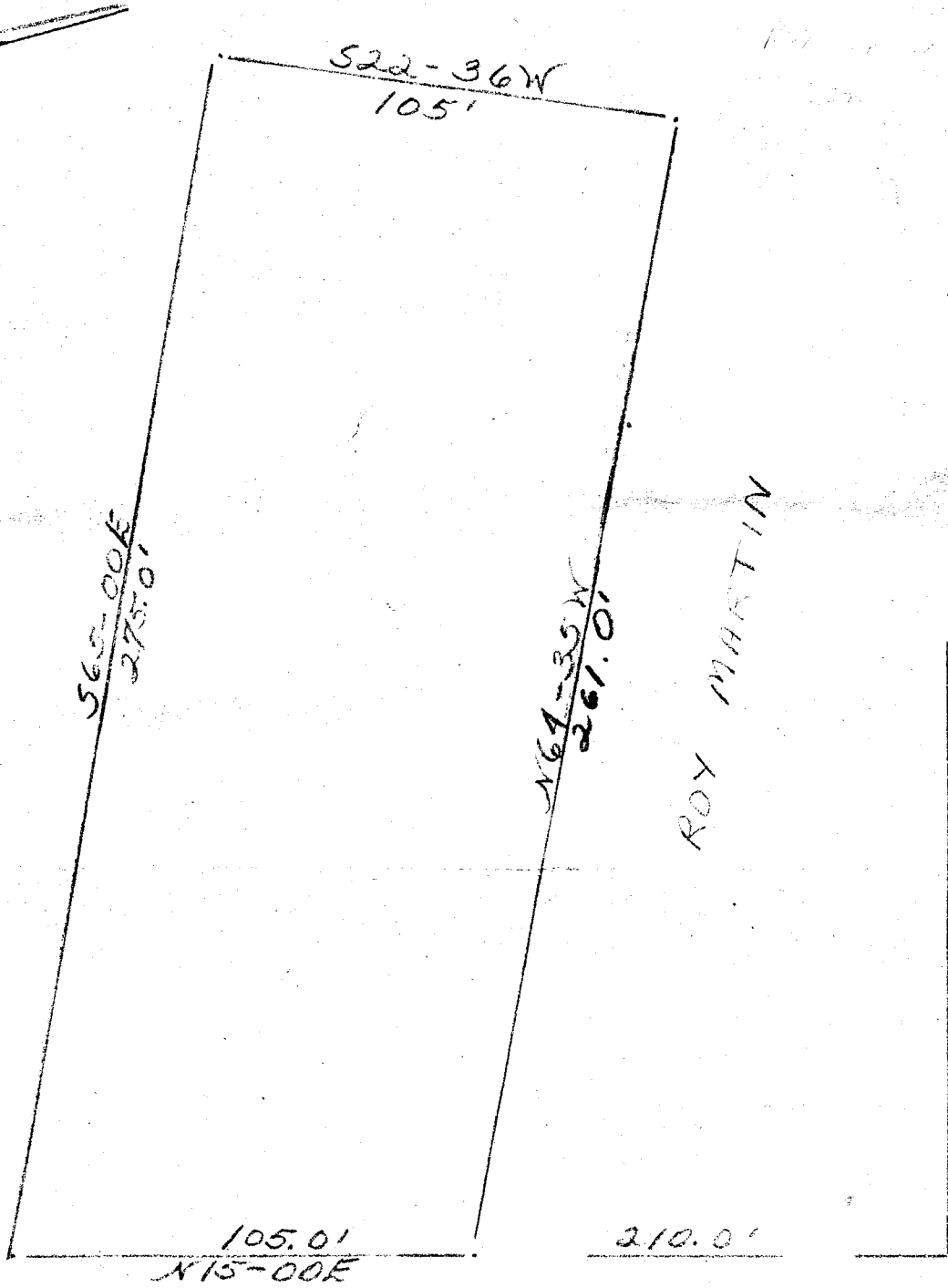


FILED
GREENVILLE CO. S. C.

AUG 26 11 08 AM 1957

OLLIE F. PATTERSON
R.M.C.



AUG 26 1957
20244

NEW DUNHAM BRIDGE ROAD

PROPERTY OF J. L. PATTERSON
GREENVILLE COUNTY JUNE 24, 1957

SCALE: 1" = 40'

SURVEYED BY: J. D. CALMES
#1346

NN-141
.50

(12768)

243-2

~~20344~~ Filed This 26 day of Aug. 1957
and Recorded in Vol. NN Page 141 at

Gladys Samuels
Register Means Conveyance Greenville County, S. C.